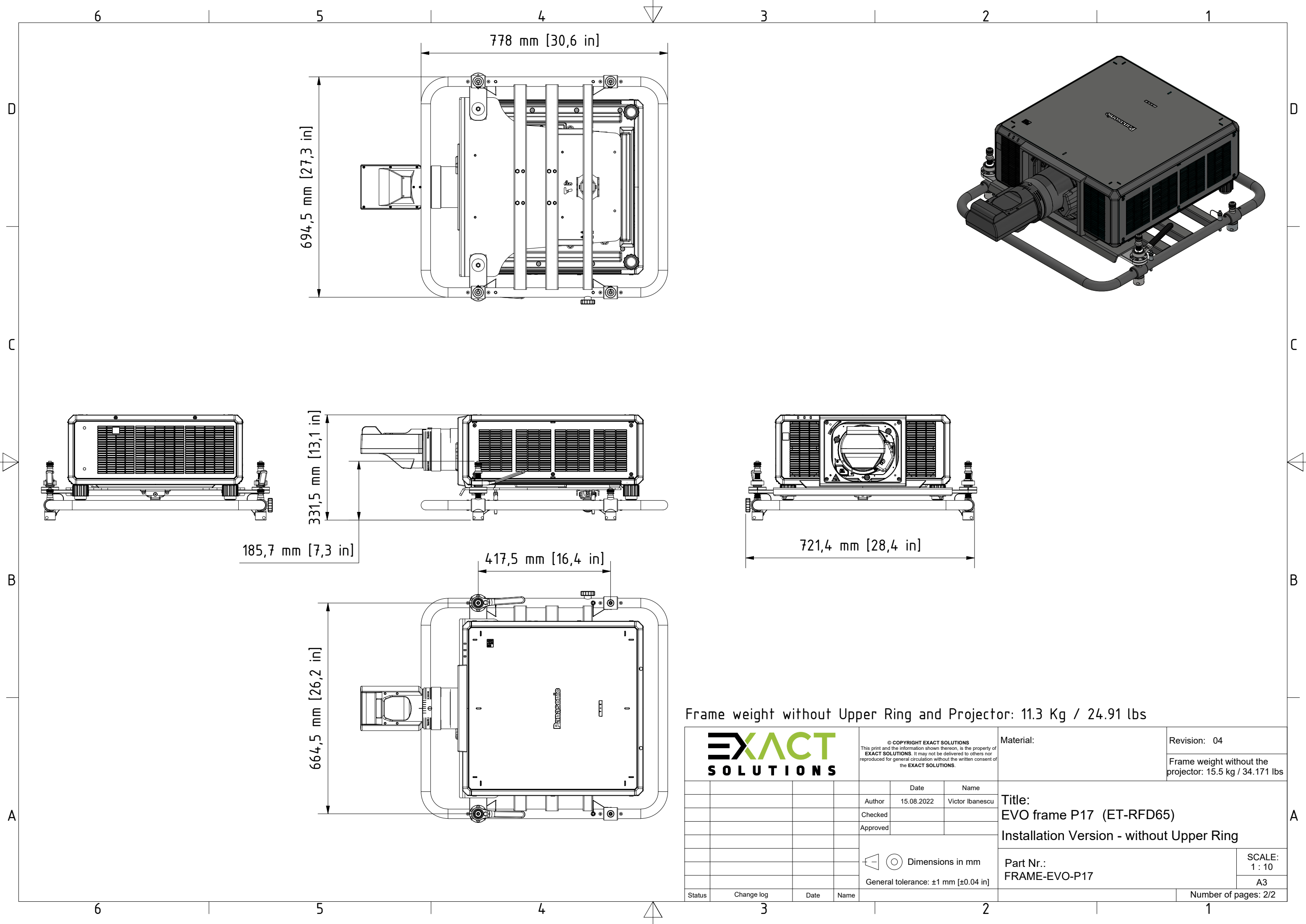


		<small>© COPYRIGHT EXACT SOLUTIONS This print and the information shown thereon, is the property of EXACT SOLUTIONS. It may not be delivered to others nor reproduced for general circulation without the written consent of the EXACT SOLUTIONS.</small>		Material:	Revision: 04
				Frame weight without the projector: 15.5 kg / 34.171 lbs	
		Date	Name	Title: EVO frame P17 (ET-RFD65)	
		Author	15.08.2022 Victor Ibanescu		
		Checked			
		Approved		Part Nr.: FRAME-EVO-P17	
		Dimensions in mm General tolerance: ±1 mm [±0.04 in]			
Status	Change log	Date	Name	SCALE: 1 : 10 A3 Number of pages: 1/2	



Frame weight without Upper Ring and Projector: 11.3 Kg / 24.91 lbs

	<small>© COPYRIGHT EXACT SOLUTIONS This print and the information shown thereon, is the property of EXACT SOLUTIONS. It may not be delivered to others nor reproduced for general circulation without the written consent of the EXACT SOLUTIONS.</small>		Material:	Revision: 04
			Frame weight without the projector: 15.5 kg / 34.171 lbs	
		Date	Name	
		Author	15.08.2022 Victor Ibanescu	
		Checked		
		Approved		
			Title: EVO frame P17 (ET-RFD65) Installation Version - without Upper Ring	
			Part Nr.: FRAME-EVO-P17	SCALE: 1 : 10 A3
Status	Change log	Date	Name	Number of pages: 2/2